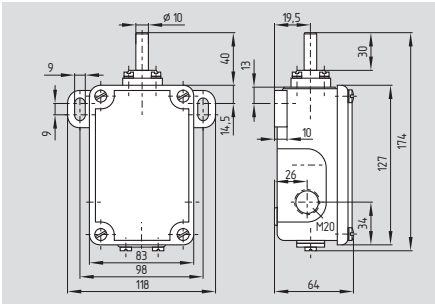


Rotating spindle limit switch

MSP 452



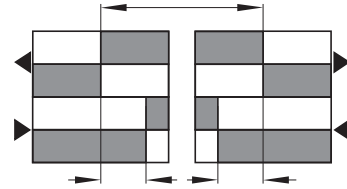
- Metal enclosure
- 4 contacts (NO)
- 2 cable entries
- Protection class IP 65

Technical data

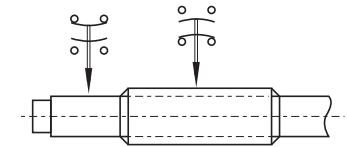
Standards:	IEC/EN 60947-5-1
Enclosure:	cast iron, galvanised, paint finish
Protection class:	IP 65 to EN 60529
Contact material:	silver
Switching system:	snap action, double break
Contact type:	change-over contact, galvanically separated contact bridges
Termination:	screw terminals M 3
Cable section:	max. 2.5 mm ² (incl. conductor ferrules)
U_{imp} :	4 kV
U_i :	250 V
I_{the} :	6 A
I_e/U_e :	2.5 A / 230 VAC
Utilisation category:	AC-15
Max. fuse rating:	10 A (slow blow), 16 A (quick blow)
Contact opening:	max. 2 x 0.5 mm
Switchover time:	≤ 10 ms (with actuating speed 10 mm/min on plunger)
Bounce duration:	≤ 1.5 ms
Ambient temperature:	- 30 °C ... + 90 °C
Mechanical life:	3 million operations
Max. turning speed of the spindle:	max. 200 rpm min. 0.5 rpm
Actuating torque:	20 Ncm
Load on spindle:	max. 500 N
Weight:	1.7 kg

Contact variants

Adjustment range 4...55 rotations



Differential travel max. 1.25 rotations



Approvals



Ordering details

MSP 452-11/11y

Note

This rotating spindle limit switch with snap action insert is only fit for use in normal to average operating conditions, e.g. for machine tools, cranes and conveyors. Protection class IP 65 to EN 60529.

Note

By reversing the contacts, the spindle revolutions can be set between 4 and 55 revolutions. The run-out towards each side is at least 5 revolutions.