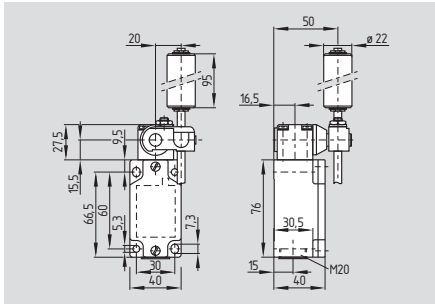


Belt alignment switches

M 330

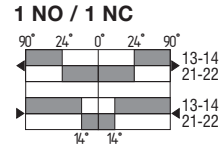


- Metal enclosure
- 2 contacts
- Snap action with self-cleaning contacts
- Mounting details to EN 50041
- Adjustable-length rod lever with nylon roller
- LED version available
- 1 cable entry M20 x 1.5
- Protection class IP 65
- For light to medium duty
- Patented low-wear actuator head

Technical data

Standards:	IEC/EN 60947-5-1
Enclosure and cover material:	light alloy die-casting, painted
Protection class:	IP 65 to EN 60529
Contact material:	silver
Contact type:	change-over contact, double break with 2 separate contact bridges, same potential
Switching system:	snap action, self-cleaning contacts
Termination:	screw terminals M 3.5
Cable section:	max. 2.5 mm ² (incl. conductor ferrules)
U _{imp} :	4 kV
U _i :	250 V
I _{the} :	6 A
I _e /U _e :	2.5 A / 230 VAC
Utilisation category:	AC-15
Max. fuse rating:	6 A gL/gG D-fuse
Contact opening:	max. 2 x 0.5 mm
Switchover time:	≤ 10 ms (with actuating speed 10 mm/min on plunger)
Bounce duration:	≤ 1.5 ms
Ambient temperature:	- 30 °C ... + 90 °C
Mechanical life:	> 30 million operations
Switching frequency:	max. 3000/h
Repeat accuracy of switching points:	± 0.02 mm on plunger

Contact variants



Approvals

cUL



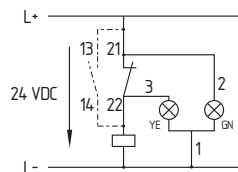
Ordering details

MV10H 330-11y-1348-①

No.	Replace	Description
-----	---------	-------------

①	G24	Without LED With LED
---	-----	-------------------------

Note



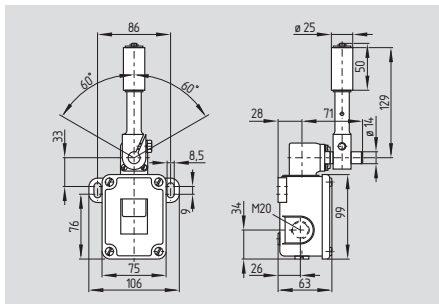
LED version:

Ordering suffix G24, protected against incorrect polarity and voltage spikes.

- Supply voltage indication: Green (GN)
- Switching position indication: Yellow (YE)

Belt alignment switches

T/M 441

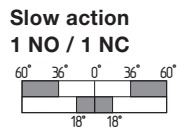
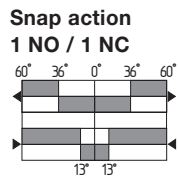


- Metal enclosure
- Slow action, change-over contact with double break
- Snap action, change-over contact with double break
- 2 cable entries
- Lever available with various lengths of roller
- Protection class IP 65
- Suitable for heavy duty

Technical data

Standards: IEC/EN 60947-5-1
 Enclosure: cast iron, galvanised, paint finish
 Protection class: IP 65 to EN 60529
 Contact material: silver
 Switching system: slow and snap action, double break
 Contact type: snap action: change-over contact, slow action: positive break NC contact ⊖ double break with 2 separate contact bridges
 Termination: screw terminals M 4
 Cable section: max. 2.5 mm² (incl. conductor ferrules)
 U_{imp}: snap action: 4 kV
 slow action: 6 kV
 U_i: snap action: 250 V
 slow action: 400 V
 suffix -k or -t: 500 V
 I_{the}: 16 A
 I_e/U_e: snap action: 4 A / 230 V
 slow action: 4 A / 400 V
 Utilisation category: AC-15
 Max. fuse rating: 16 A gL/gG D-fuse
 Contact opening: snap action: max. 2 x 2.5 mm
 slow action: max. 2 x 6.0 mm
 Switchover time: snap action: ≤ 35 ms
 Bounce duration: snap action: ≤ 5 ms
 Ambient temperature: - 30 °C ... + 90 °C
 Mechanical life: 10 million operations
 Switching frequency: max. 3000/h
 Repeat accuracy of switching points: -

Contact variants



Approvals

cUL



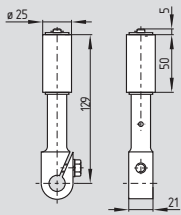
Ordering details

① 441-11y-②-③-④

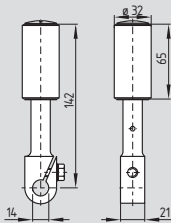
No.	Replace	Description
①	M. T.	Snap action Slow action
②		For the appropriate actuator: see page 55
③	ü	Slow action with overlapping contacts
④	k	Tropical version with ceramic insulation
	t	Tropical and temperature-resistant version - 40 °C ... + 200 °C
	1276	Gold-plated contacts

Belt alignment switches

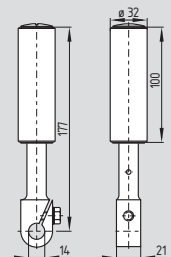
System components



Belt alignment lever 243



Belt alignment lever 966



Belt alignment lever 1224

Ordering details

Belt alignment levers

243	ordering suffix -243
966	ordering suffix -966
1224	ordering suffix -1224